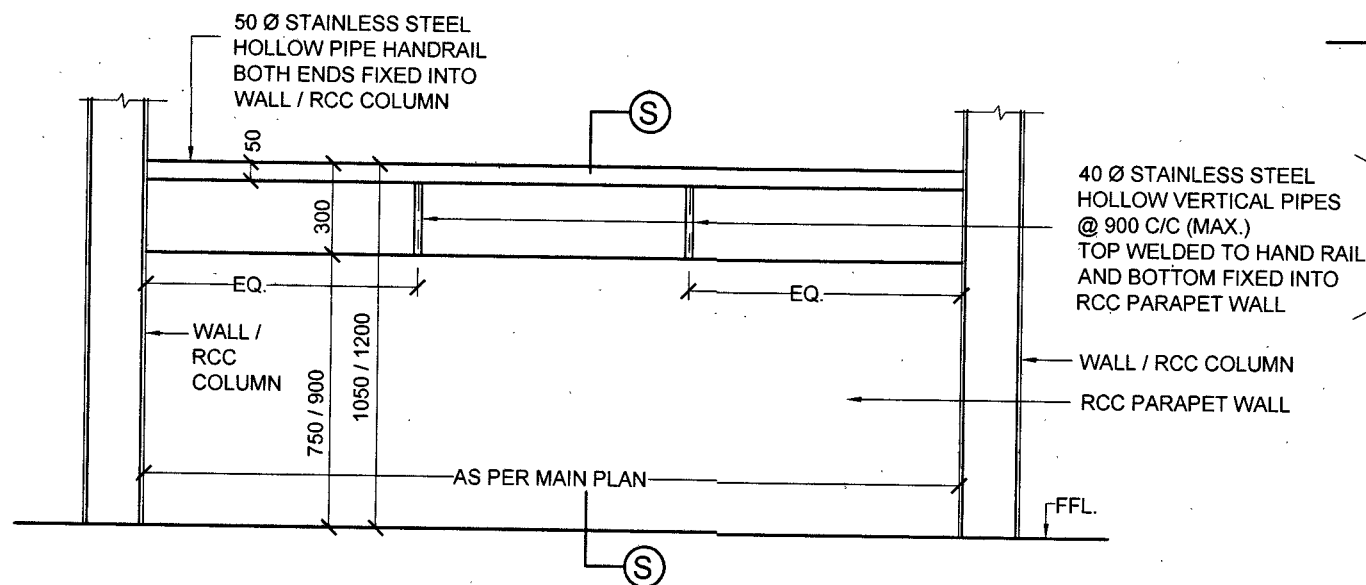


SL. NO.	NOTES

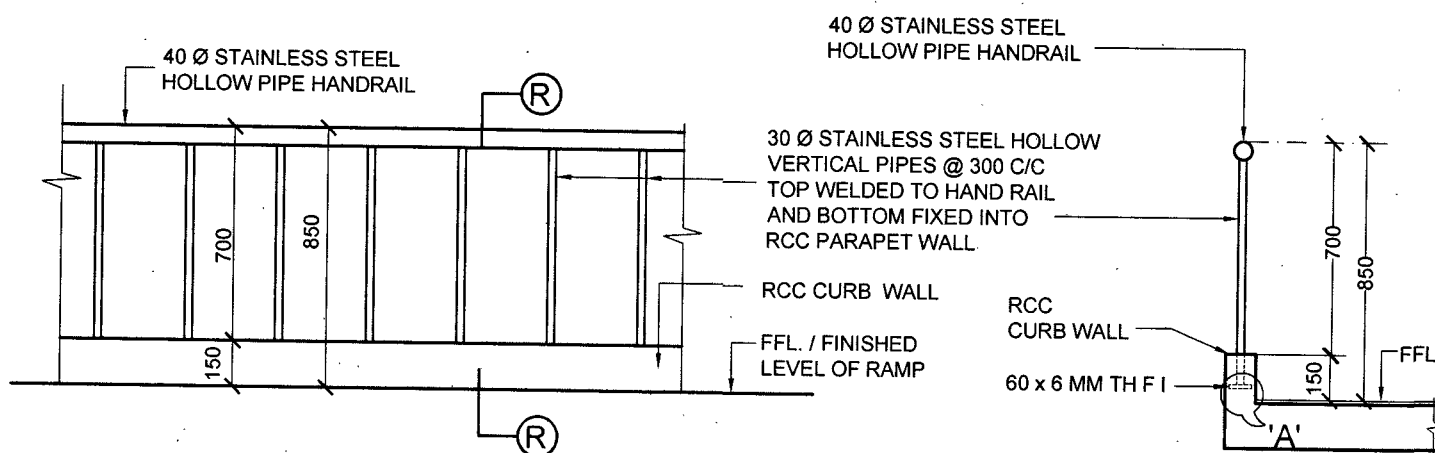


TYPICAL DETAILS OF STAINLESS STEEL RAILING - (TYPE - 6 & 7)

SCALE 1 : 25

TYPE - 6 (1050 MM HIGH FROM FFL.)

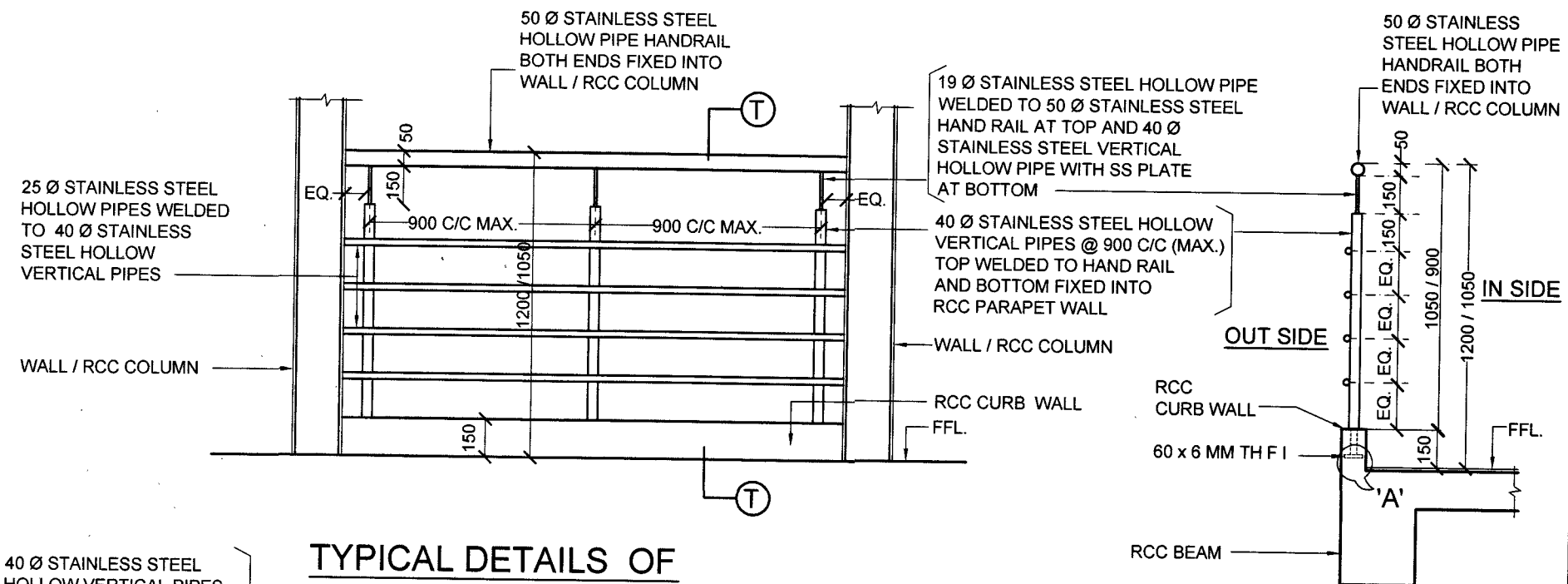
TYPE - 7 (1200 MM HIGH FROM FFL.)



DETAILS OF STAINLESS STEEL RAILING TYPE - 5

SCALE 1 : 25

(FOR DISABLED PEOPLE RAMP)



TYPICAL DETAILS OF STAINLESS STEEL RAILING TYPE - 8 & 9

SCALE 1 : 25

TYPE - 8 (1200 MM HIGH FROM FFL.)

TYPE - 9 (1050 MM HIGH FROM FFL.)

SECTION AT 'T - T'

SCALE 1 : 25

SECTION AT 'R - R'

SCALE 1 : 25

SECTION AT 'S - S'

SCALE 1 : 25

SL NO	DATE	DESCRIPTION	SIGN.
REVISIONS			
TYPICAL DETAILS OF STAINLESS STEEL (SS) RAILING.			
TYPE - 5, TYPE - 6 & 7, TYPE - 8 & 9			
DATE	20 - 6 - 2022	CHIEF ENGINEER (NAVY) VISAKHAPATNAM ZONE	SHT. NO.
DRN	K. USHA		2/2
TCD			
CKD			
SCALE	AS SHOWN	REF. DRG.NO.CEVZ/2022/TD-21	
KSVa		ffindia	Prayni
AAD (ARCH)		JT. DIR. (ARCH)	DIRECTOR (ARCH) FOR CHIEF ENGINEER